

Present State... in no particular order

Crowded?

Safe?

Affected?

Confused?

Content?

COMMUNITY?

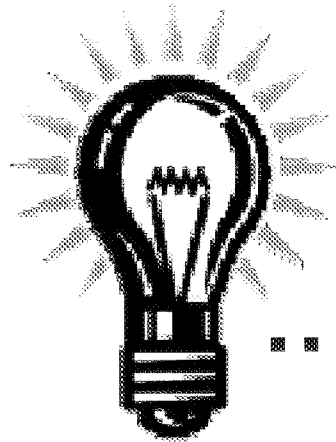
Neighborhood?

Inclusion?

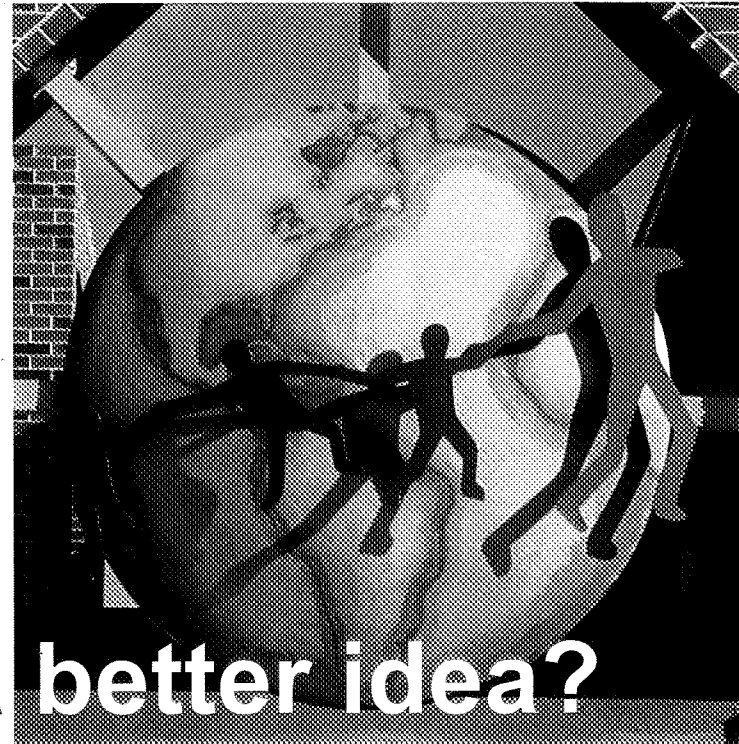
Cost?

When?

WHY?



... a better idea?



Openly

Bring people together

Discuss common issues

Develop achievable goals

Present a viable and “unifiable” plan

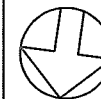
Implement the plan

FLOWER HILL PRIMARY SCHOOL (K-3)

Site:	13.2 acres
Building:	41,004 g.s.f.
Current Enrollment:	378
September 2010 Enrollment:	372 (projected)
Capacity per Class Size Policy:	490 (as currently utilized) (17) Sections + (2) Sp. Ed.



BBS
ARCHITECTS &
ENGINEERS



HUNTINGTON UNION FREE SCHOOL DISTRICT
FLOWER HILL PRIMARY SCHOOL (1 OF 4) (K-3)
GOOGLE EARTH AERIAL

NOT TO SCALE

AERIAL

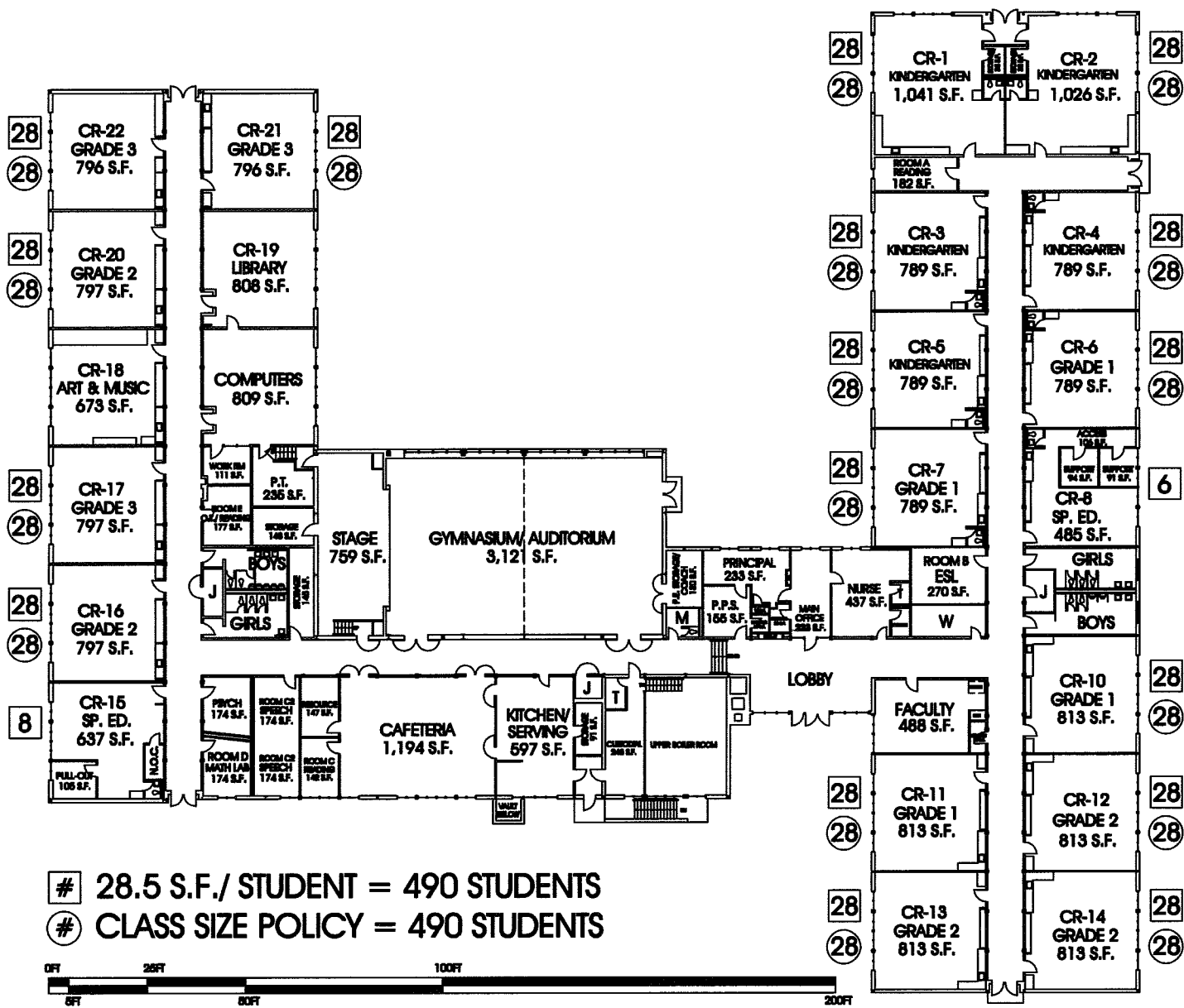
06-15-10

PER SUFFOLK COUNTY TAX MAP INFORMATION THE EXISTING SITE IS (13.2) ACRES
FOR (K-6) ELEMENTARY SCHOOLS, S.E.D. REQUIRES THREE (3) ACRES BASE, PLUS ONE (1) ACRE PER ONE HUNDRED (100) STUDENTS
PER THIS GUIDELINE, THIS SITE HAS AN ENROLLMENT CAPACITY OF 1,020 ELEMENTARY (K-6) STUDENTS.

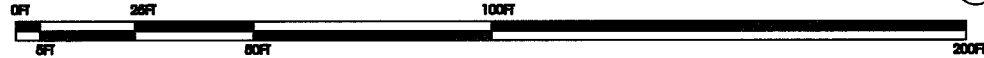


HUNTINGTON UNION FREE SCHOOL DISTRICT
FLOWER HILL PRIMARY SCHOOL (1 OF 4) (K-3)
EXISTING FIRST FLOOR PLAN

NOT TO SCALE
FH-02
06-15-10



28.5 S.F./ STUDENT = 490 STUDENTS
CLASS SIZE POLICY = 490 STUDENTS



FLOWER HILL PRIMARY SCHOOL
41,004 G.S.F.
S.E.D. B.A.U. CAPACITY IS (490) STUDENTS
S.E.D. B.A.U. CAPACITY = 84 S.F./ STUDENT
JUNE 2010 ENROLLMENT IS (378) STUDENTS
CURRENT ENROLLMENT = 108 S.F./ STUDENT

JEFFERSON PRIMARY SCHOOL (K-3)

Site:	8.0 acres
Building:	44,154 g.s.f.
Current Enrollment:	351
September 2010 Enrollment:	334 (projected)
Capacity per Class Size Policy:	449 (as currently utilized) (16) Sections + (1) Sp. Ed.



BBS
ARCHITECTS &
ENGINEERS



HUNTINGTON UNION FREE SCHOOL DISTRICT
JEFFERSON PRIMARY SCHOOL (1 OF 4) (K-3)

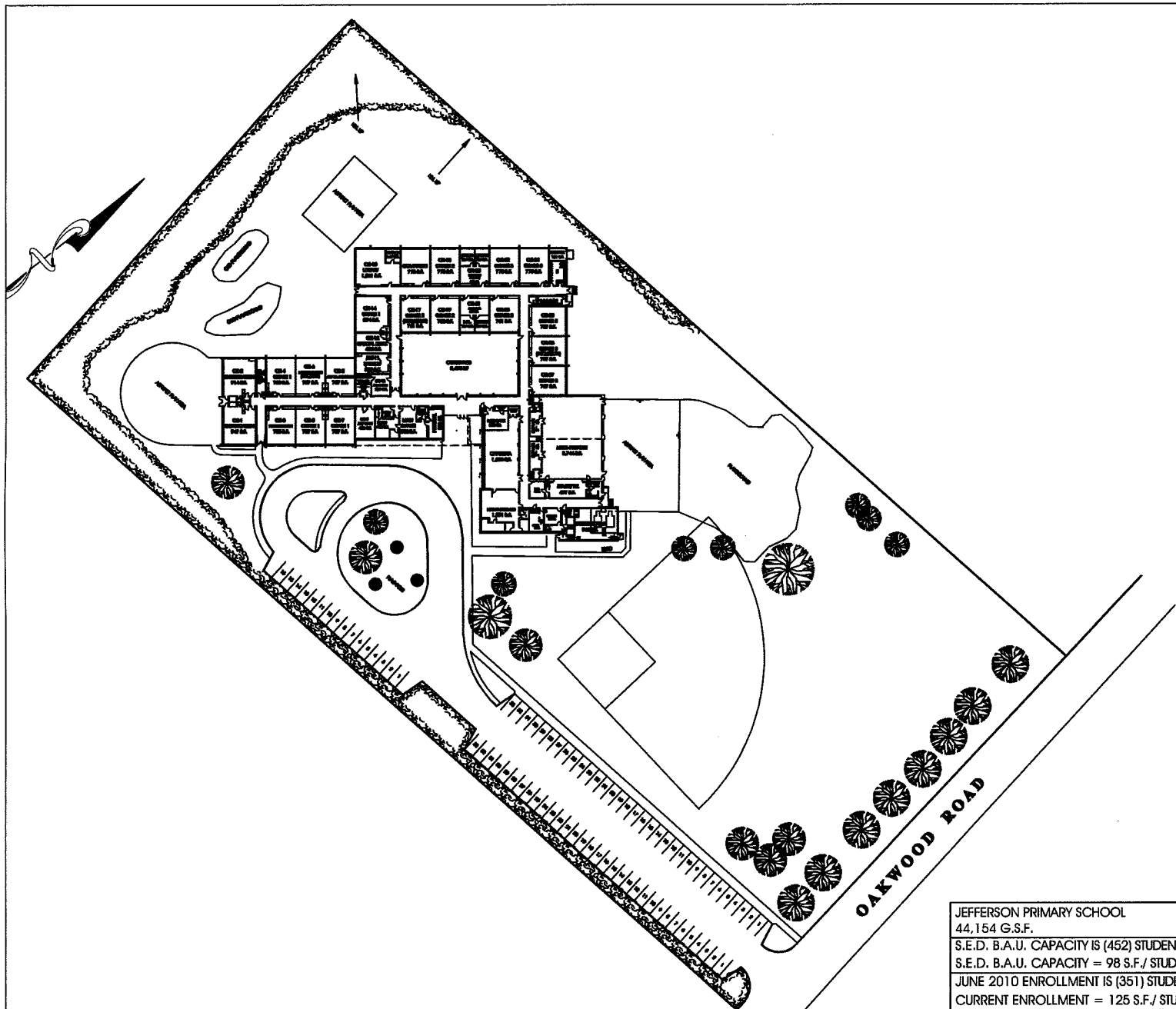
GOOGLE EARTH AERIAL

PER SUFFOLK COUNTY TAX MAP INFORMATION THE EXISTING SITE IS (8.0) ACRES
FOR (K-6) ELEMENTARY SCHOOLS, S.E.D. REQUIRES THREE (3) ACRES BASE, PLUS ONE (1) ACRE PER ONE HUNDRED (100) STUDENTS
PER THIS GUIDELINE, THIS SITE HAS AN ENROLLMENT CAPACITY OF (500) SECONDARY (K-6) STUDENTS.

NOT TO SCALE

AERIAL

06-16-10



JEFFERSON PRIMARY SCHOOL
 44,154 G.S.F.
 S.E.D. B.A.U. CAPACITY IS (452) STUDENTS
 S.E.D. B.A.U. CAPACITY = 98 S.F./ STUDENT
 JUNE 2010 ENROLLMENT IS (351) STUDENTS
 CURRENT ENROLLMENT = 125 S.F./ STUDENT

BBS
 ARCHITECTS &
 ENGINEERS

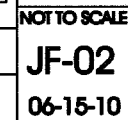


HUNTINGTON UNION FREE SCHOOL DISTRICT
JEFFERSON PRIMARY SCHOOL (1 OF 4) (K-3)
 EXISTING SITE PLAN

NOT TO SCALE

JF-01

06-15-10



SOUTHDOWN PRIMARY SCHOOL (K-3)

Site:	8.0 acres
Building:	41,004 g.s.f.
Current Enrollment:	366
September 2010 Enrollment:	364 (projected)
Capacity per Class Size Policy:	460 (as currently utilized) (16) Sections + (1) Sp. Ed.

BBS
ARCHITECTS &
ENGINEERS



HUNTINGTON UNION FREE SCHOOL DISTRICT
SOUTHDOWN PRIMARY SCHOOL (1 OF 4) (K-3)

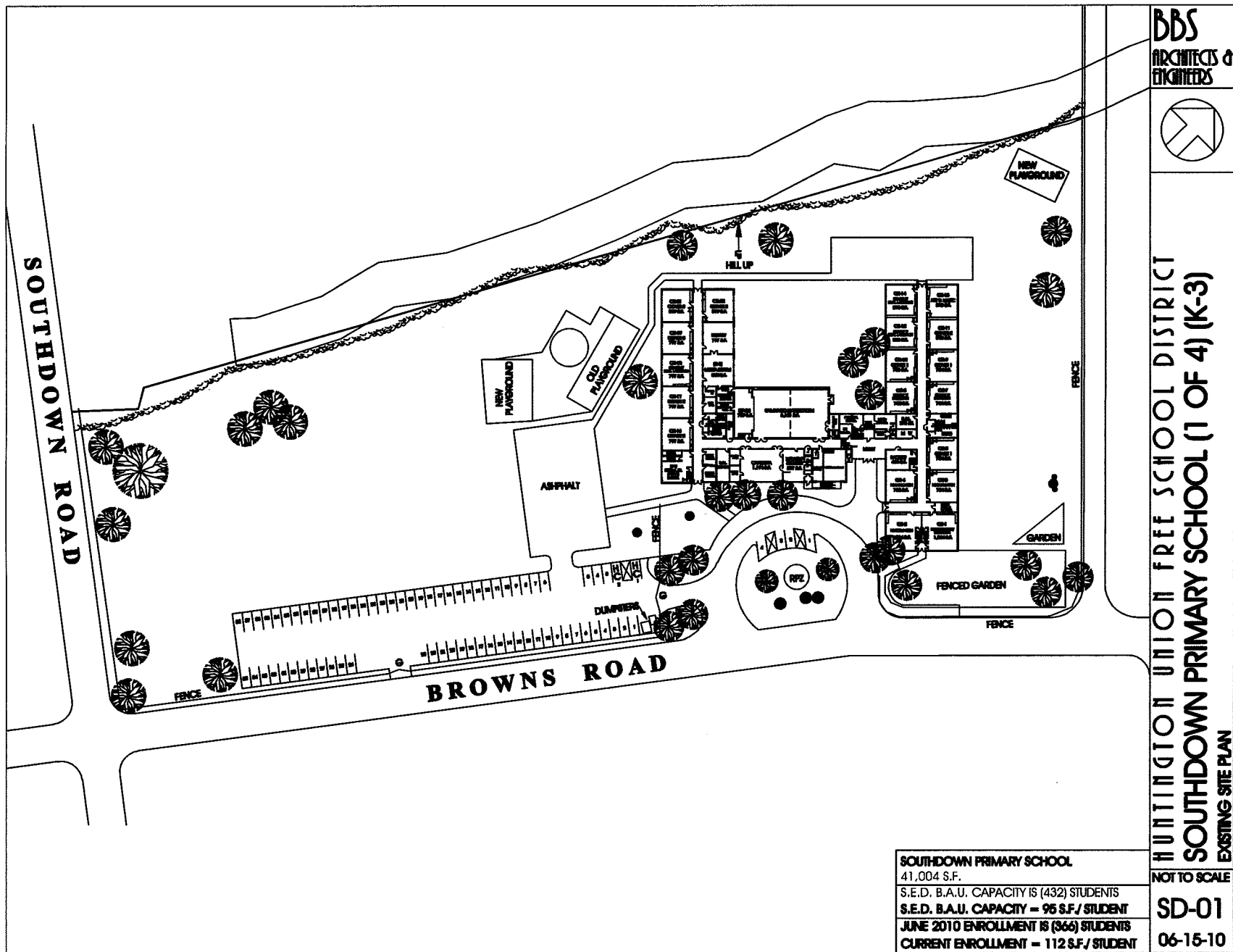
GOOGLE EARTH/AERIAL



PER SUFFOLK COUNTY TAX MAP INFORMATION THE EXISTING SITE IS (8.0) ACRES
FOR (K-6) ELEMENTARY SCHOOLS, S.E.D. REQUIRES THREE (3) ACRES BASE, PLUS ONE (1) ACRE PER ONE HUNDRED (100) STUDENTS
PER THIS GUIDELINE, THIS SITE HAS AN ENROLLMENT CAPACITY OF 500 ELEMENTARY (K-6) STUDENTS.

NOT TO SCALE

AERIAL
06-16-10



BBS
ARCHITECTS &
ENGINEERS



HUNTINGTON UNION FREE SCHOOL DISTRICT
SOUTHDOWN PRIMARY SCHOOL (1 OF 4) (K-3)
EXISTING SITE PLAN

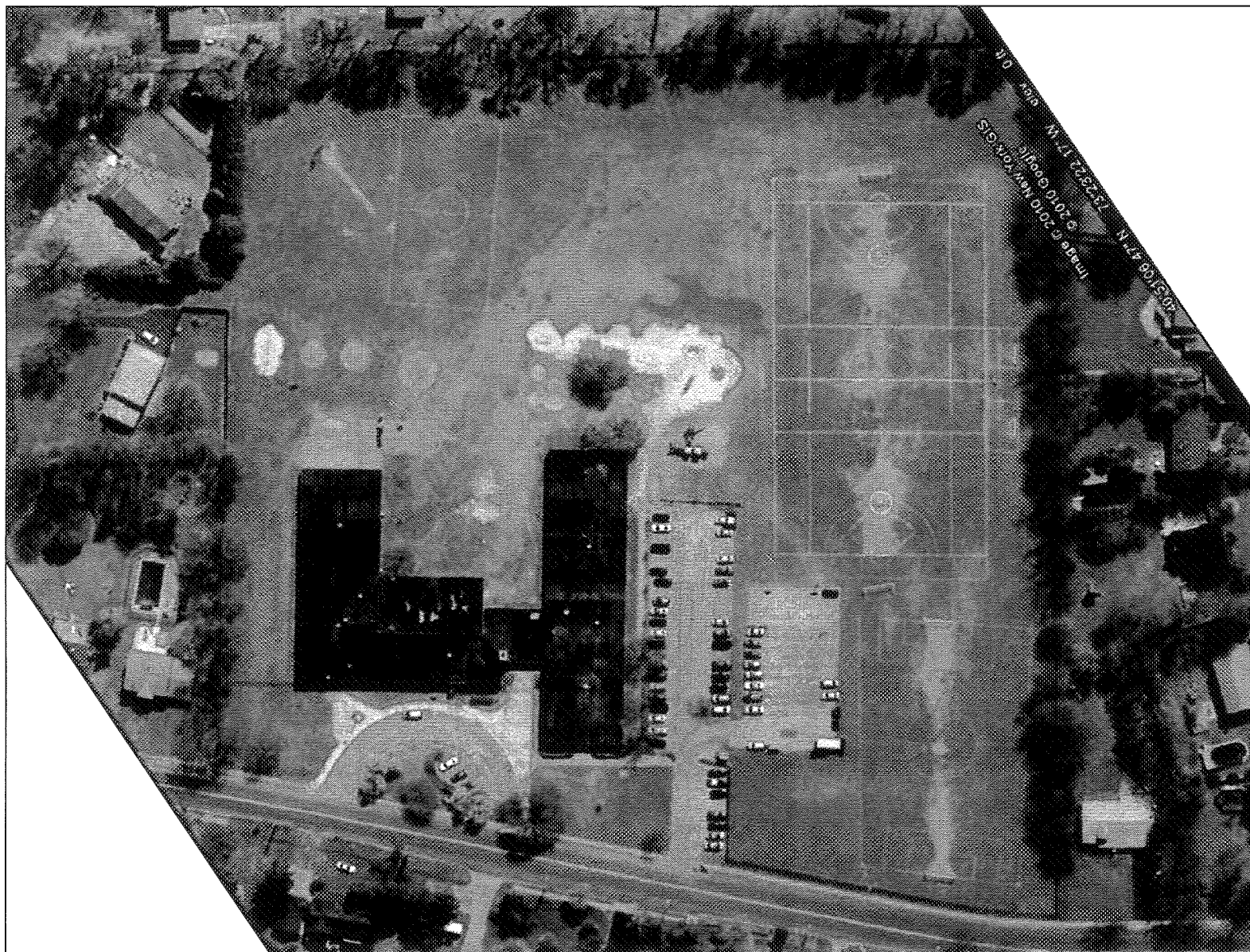
SOUTHDOWN PRIMARY SCHOOL
41,004 S.F.
S.E.D. B.A.U. CAPACITY IS (432) STUDENTS
S.E.D. B.A.U. CAPACITY = 96 S.F./ STUDENT
JUNE 2010 ENROLLMENT IS (366) STUDENTS
CURRENT ENROLLMENT = 112 S.F./ STUDENT

NOT TO SCALE

SD-01
06-15-10

WASHINGTON PRIMARY SCHOOL (K-3)

Site:	11.0 acres
Building:	41,004 g.s.f.
Current Enrollment:	390
September 2010 Enrollment:	379 (projected)
Capacity per Class Size Policy:	516 (as currently utilized) (18) Sections



BBS
ARCHITECTS &
ENGINEERS



HUNTINGTON UNION FREE SCHOOL DISTRICT
WASHINGTON PRIMARY SCHOOL (1 OF 4) (K-3)
GOOGLE EARTH AERIAL

PER SUFFOLK COUNTY TAX MAP INFORMATION THE EXISTING SITE IS (11.0) ACRES
FOR (K-6) ELEMENTARY SCHOOLS, S.E.D. REQUIRES THREE (3) ACRES BASE, PLUS ONE (1) ACRE PER ONE HUNDRED (100) STUDENTS
PER THIS GUIDELINE, THIS SITE HAS AN ENROLLMENT CAPACITY OF (800) ELEMENTARY (K-6) STUDENTS.

NOT TO SCALE
AERIAL
06-15-10

BBS
ARCHITECTS &
ENGINEERS

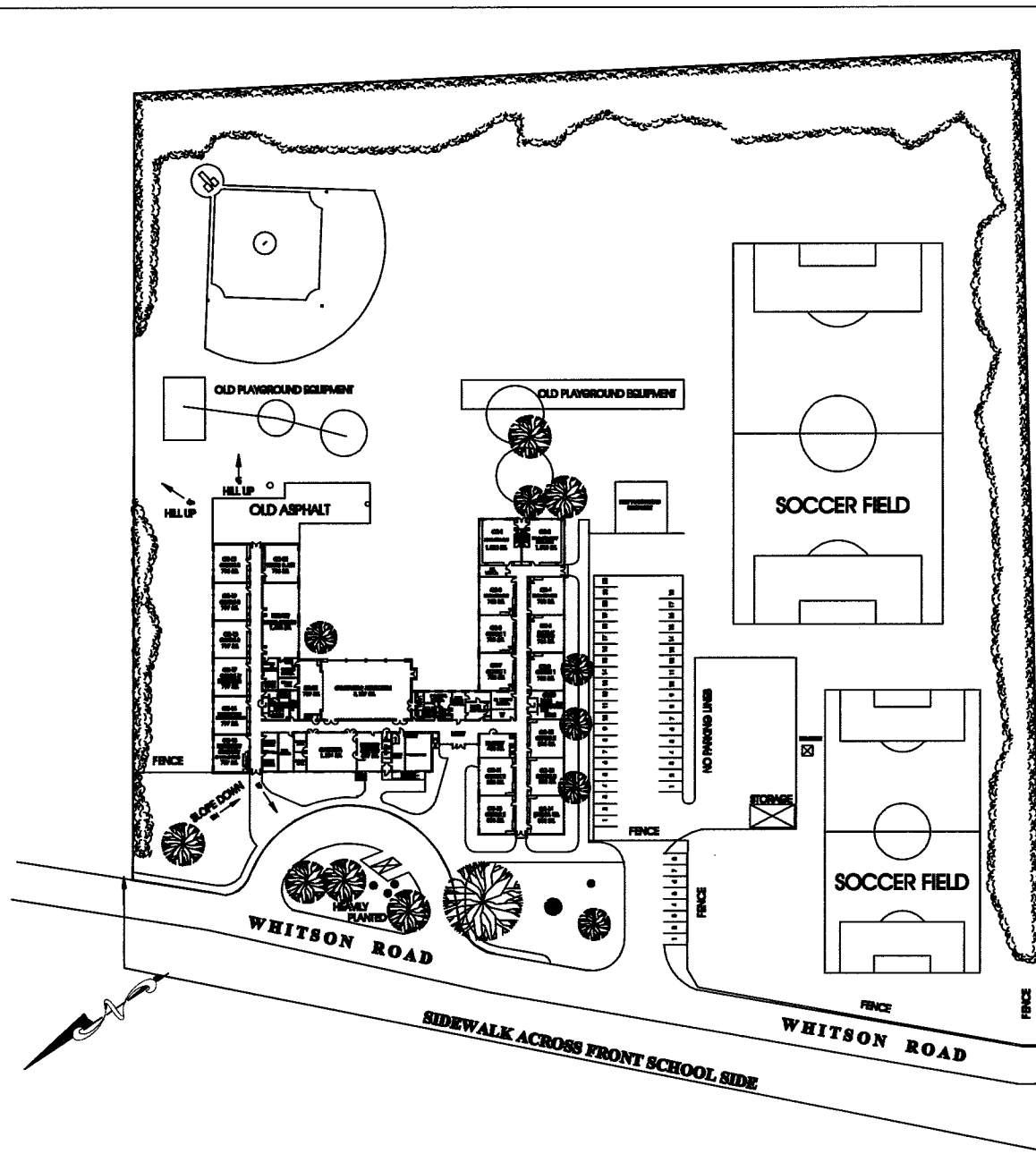


HUNTINGTON UNION FREE SCHOOL DISTRICT
WASHINGTON PRIMARY SCHOOL (1 OF 4) (K-3)
EXISTING SITE PLAN

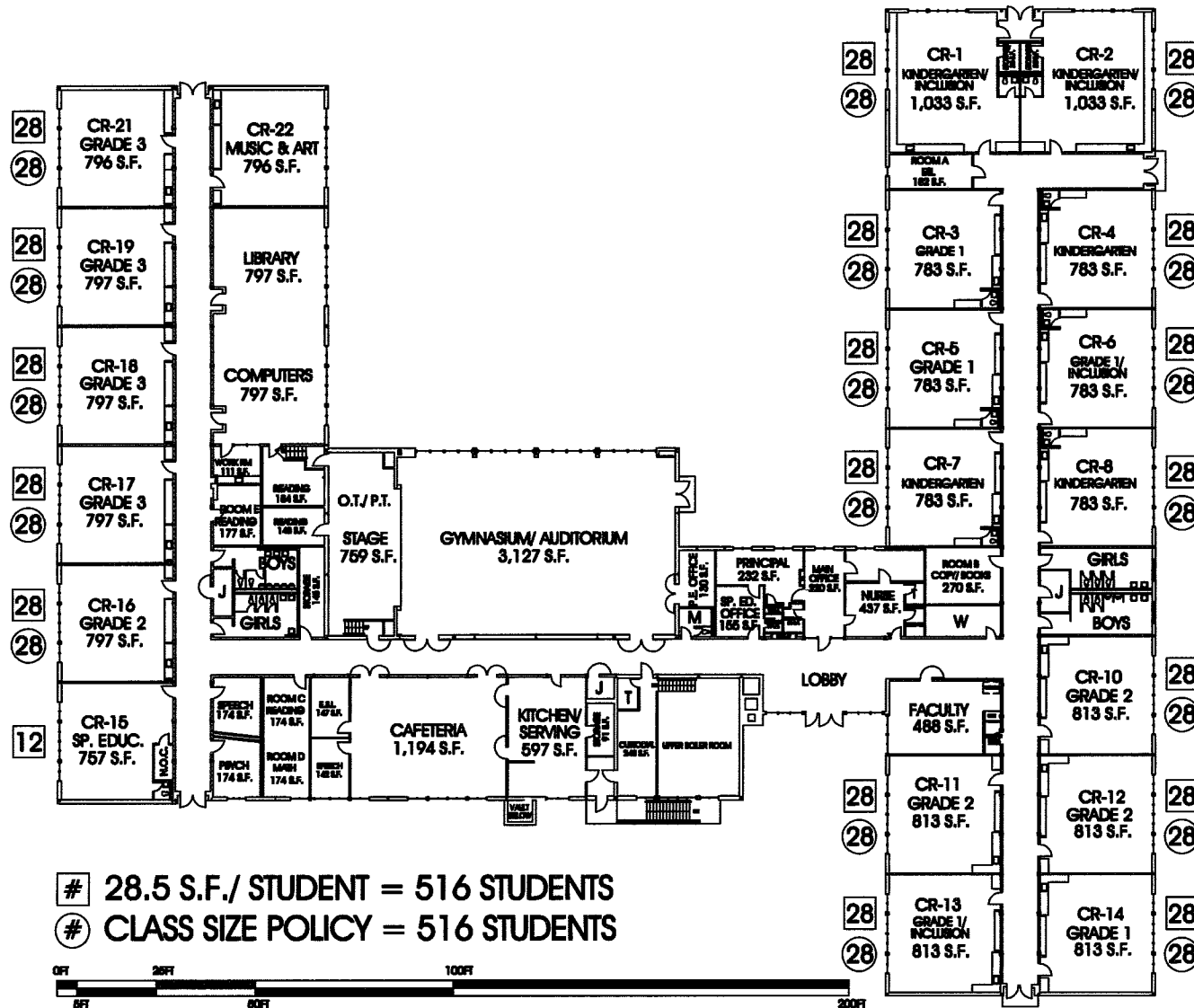
NOT TO SCALE

WA-01

06-15-10



WASHINGTON PRIMARY SCHOOL
41,664 G.S.F.
S.E.D. B.A.U. CAPACITY IS (516) STUDENTS
S.E.D. B.A.U. CAPACITY = 79 S.F./STUDENT
JUNE 2010 ENROLLMENT IS (390) STUDENTS
CURRENT ENROLLMENT = 105 S.F./STUDENT



28.5 S.F./ STUDENT = 516 STUDENTS
 # CLASS SIZE POLICY = 516 STUDENTS



WASHINGTON PRIMARY SCHOOL
 41,004 G.S.F.
 S.E.D. B.A.U. CAPACITY IS (516) STUDENTS
 S.E.D. B.A.U. CAPACITY = 79 S.F./ STUDENT
 JUNE 2010 ENROLLMENT IS (390) STUDENTS
 CURRENT ENROLLMENT = 106 S.F./ STUDENT

BBS
 ARCHITECTS &
 ENGINEERS



HUNTINGTON UNION FREE SCHOOL DISTRICT
 WASHINGTON PRIMARY SCHOOL (1 OF 4) (K-3)
 EXISTING FIRST FLOOR PLAN

NOT TO SCALE

WA-02

06-15-10

WOODHULL SCHOOL (4-6) & (4-5)

Site:	24.9 acres
Building:	52,616 g.s.f.
Current (4-6) Enrollment:	519
September 2010 (4-5) Enrollment:	709 (projected)
Capacity per Class Size Policy:	567 (as currently utilized (4-6))
Capacity per Class Size Policy:	721 (as projected for use as (4-5))



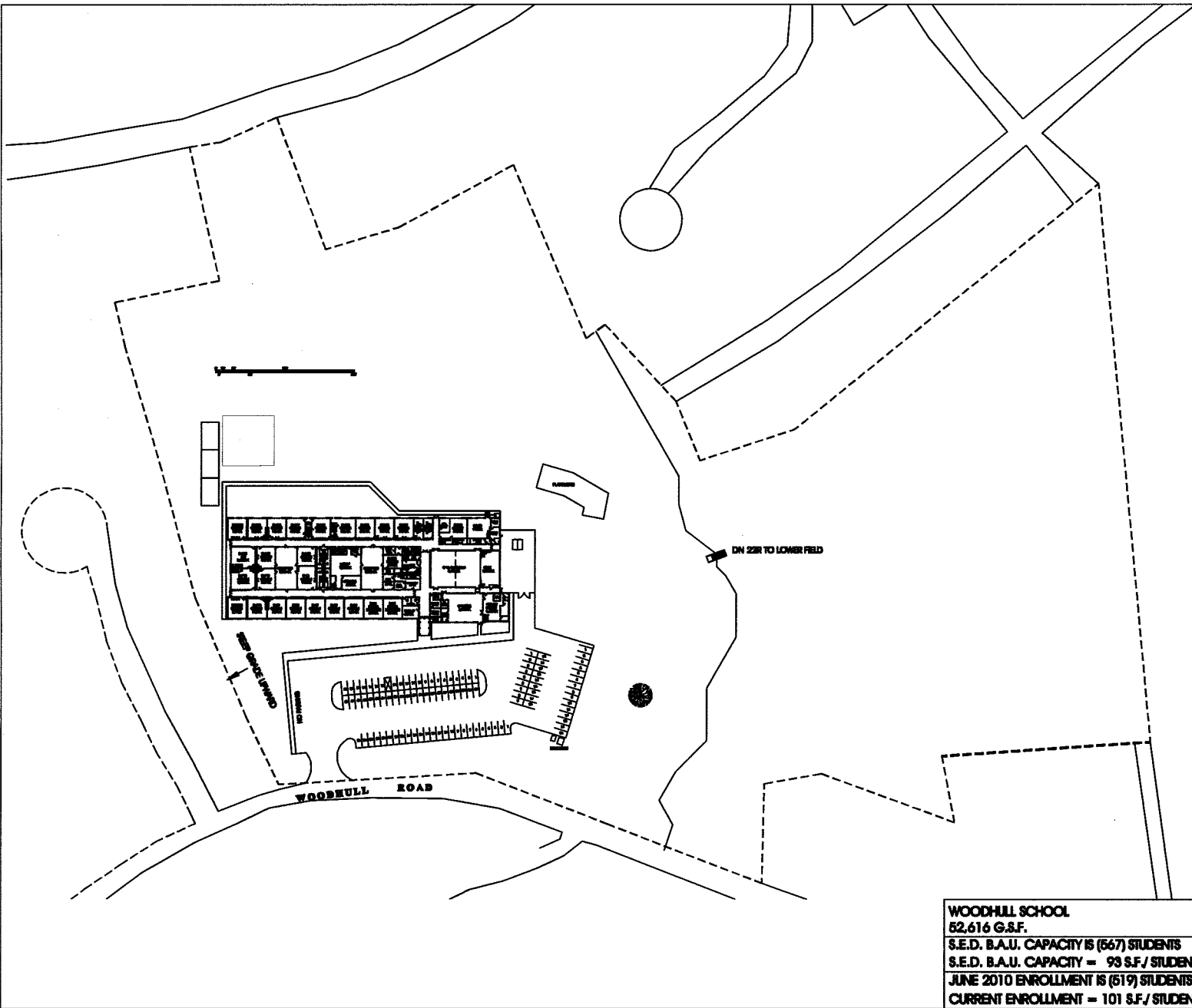
BBS
ARCHITECTS &
ENGINEERS



HUNTINGTON UNION FREE SCHOOL DISTRICT
WOODHULL INTERMEDIATE SCHOOL (1 OF 2) (4-6)
GOOGLE EARTH AERIAL

PER SUFFOLK COUNTY TAX MAP INFORMATION THE EXISTING SITE IS (24.9) ACRES
FOR (K-6) ELEMENTARY SCHOOLS, S.E.D. REQUIRES THREE (3) ACRES BASE, PLUS ONE (1) ACRE PER ONE HUNDRED (100) STUDENTS
PER THIS GUIDELINE, THIS SITE HAS AN ENROLLMENT CAPACITY OF (2,190) ELEMENTARY (K-6) STUDENTS.

NOT TO SCALE
AERIAL
06-16-10



BBS
ARCHITECTS &
ENGINEERS



HUNTINGTON UNION FREE SCHOOL DISTRICT
WOODHILL INTERMEDIATE SCHOOL (1 OF 2) (4-6)
EXISTING SITE PLAN

NOT TO SCALE

WH-01

06-15-10

WOODHILL SCHOOL
62,616 G.S.F.
S.E.D. B.A.U. CAPACITY IS (567) STUDENTS
S.E.D. B.A.U. CAPACITY = 93 S.F./STUDENT
JUNE 2010 ENROLLMENT IS (519) STUDENTS
CURRENT ENROLLMENT = 101 S.F./STUDENT

EVERYTHING FIRST! EL COOB BE AN

WH-02

06-15-10



WOODHULL SCHOOL
52,616 G.S.F.
S.E.D. B.A.U. CAPACITY IS (567) STUDENTS
S.E.D. B.A.U. CAPACITY = 93 S.F./STUDENT
JUNE 2010 ENROLLMENT IS (619) STUDENTS
CURRENT ENROLLMENT = 101 S.F./STUDENT

BBS
ARCHITECTS &
ENGINEERS

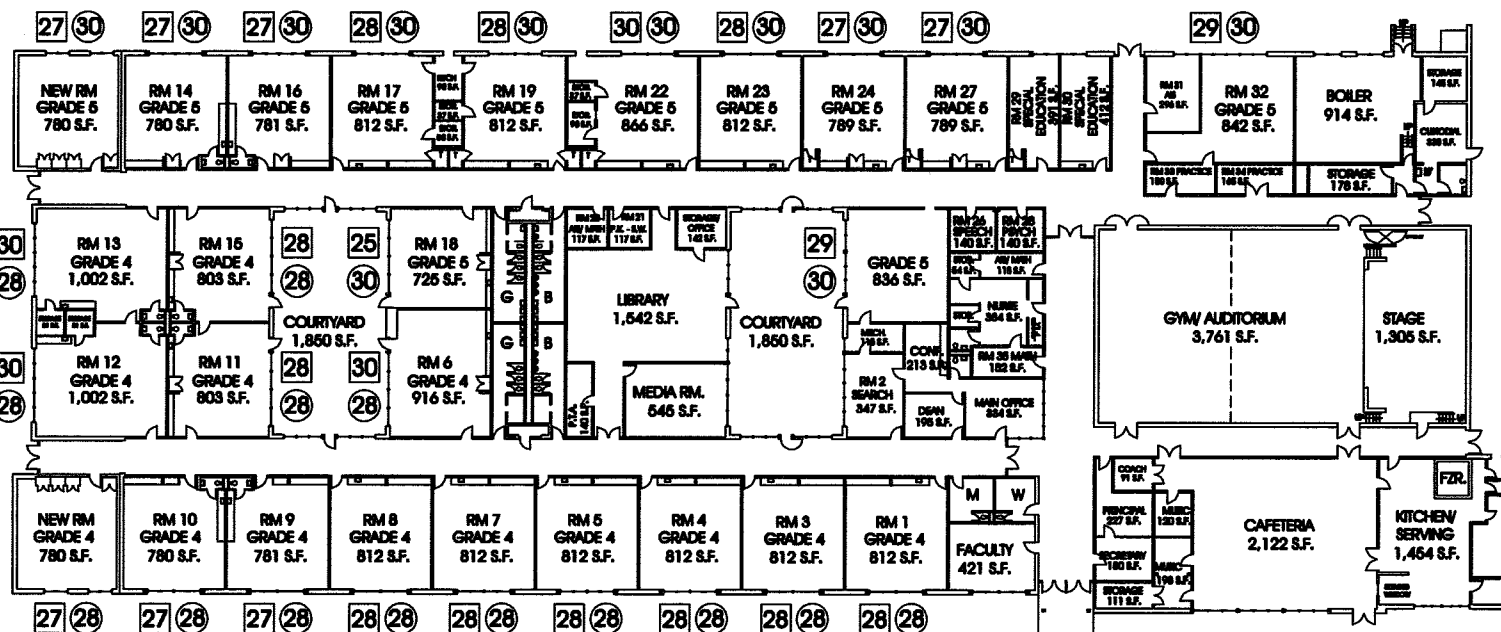


HUNTINGTON UNION FREE SCHOOL DISTRICT
WOODHULL SCHOOL GRADES (4 & 5)
PROJECTED FIRST FLOOR PLAN

NOT TO SCALE

WH-03

06-15-10



- # 28.5 S.F./ STUDENT = 721 STUDENTS
- ⊙ CLASS SIZE POLICY = 752 STUDENTS



WOODHULL SCHOOL
52,616 G.S.F.
S.E.D. B.A.U. CAPACITY IS (721) STUDENTS
S.E.D. B.A.U. CAPACITY = 73 S.F./ STUDENT
JUNE 2010 ENROLLMENT IS (519) STUDENTS
CURRENT ENROLLMENT = 101 S.F./ STUDENT

JACK ABRAMS SCHOOL (4-6) & (6)

Site:	12.9 acres
Building:	106,885 g.s.f.
Current (4-6) Enrollment:	518
September 2010 (6) Enrollment:	347 (projected)
Capacity per Class Size Policy:	516 (as currently utilized (4-6))
Capacity per Class Size Policy:	417 (as projected for use as (6))



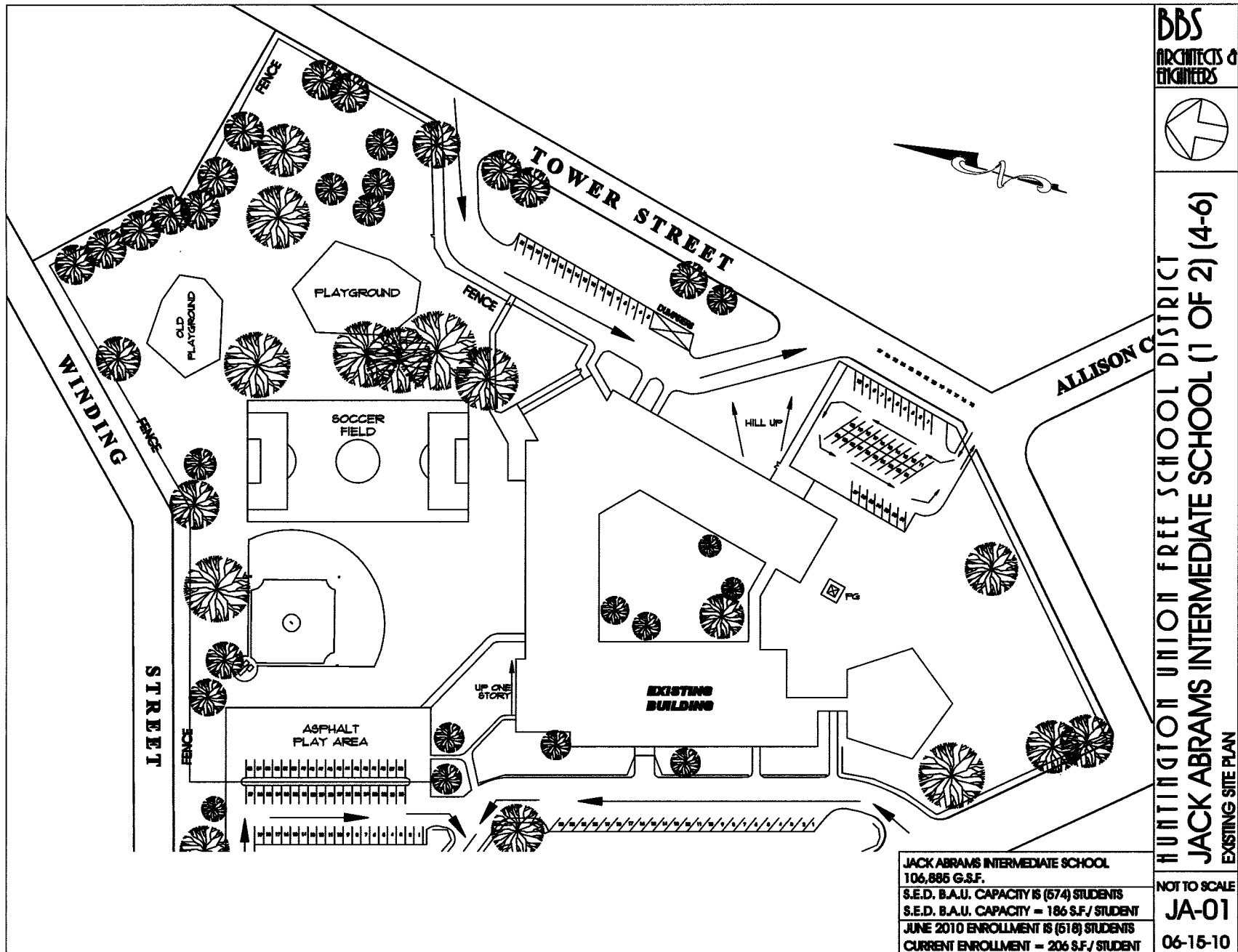
BBS
ARCHITECTS &
ENGINEERS



HUNTINGTON UNION FREE SCHOOL DISTRICT
JACK ABRAMS INTERMEDIATE SCHOOL (1 OF 2) (4-6)
GOOGLE EARTH AERIAL

PER SUFFOLK COUNTY TAX MAP INFORMATION THE EXISTING SITE IS (12.9) ACRES
FOR (K-6) ELEMENTARY SCHOOLS, S.E.D. REQUIRES THREE (3) ACRES BASE, PLUS ONE (1) ACRE PER ONE HUNDRED (100) STUDENTS
PER THIS GUIDELINE, THIS SITE HAS AN ENROLLMENT CAPACITY OF (990) ELEMENTARY (K-6) STUDENTS.

NOT TO SCALE
AERIAL
06-16-10



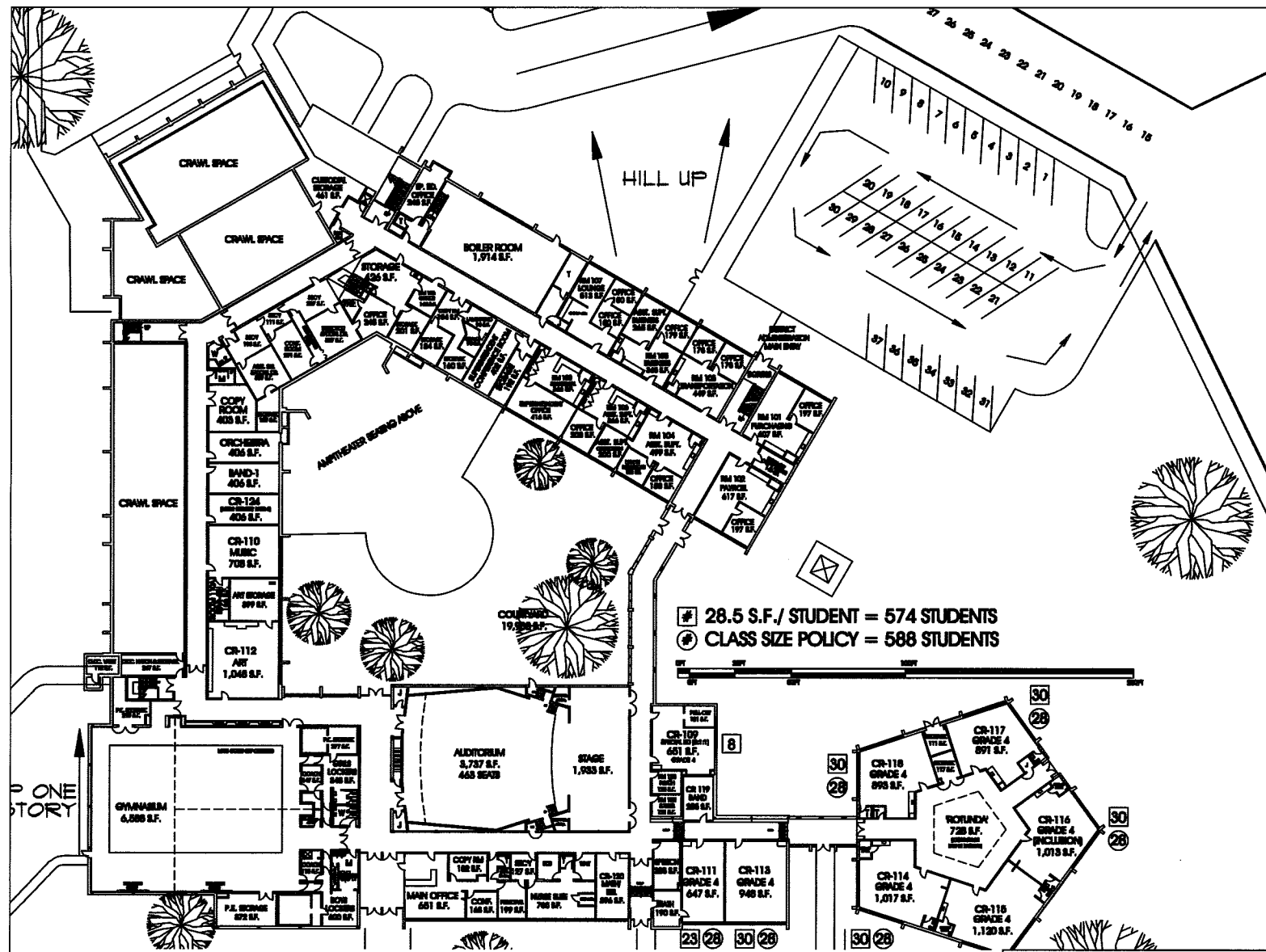
BBS
ARCHITECTS &
ENGINEERS

NOT TO SCALE
JA-01
06-15-10

BBS
ARCHITECTS &
ENGINEERS



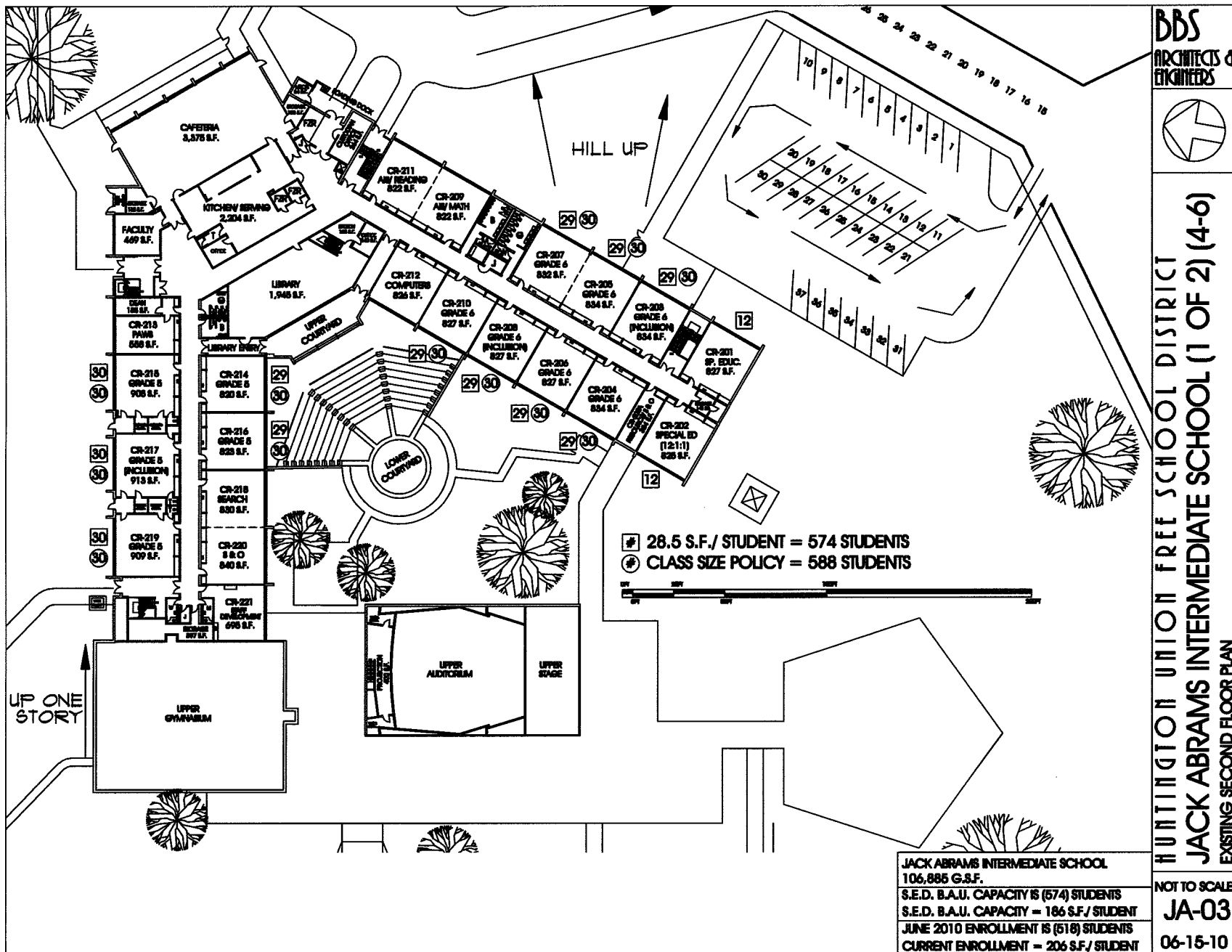
HUNTINGTON UNION FREE SCHOOL DISTRICT
JACK ABRAMS INTERMEDIATE SCHOOL (1 OF 2) (4-6)
EXISTING FIRST FLOOR PLAN



28.5 S.F./STUDENT = 574 STUDENTS
CLASS SIZE POLICY = 588 STUDENTS

JACK ABRAMS INTERMEDIATE SCHOOL
106,885 G.S.F.
S.E.D. B.A.U. CAPACITY IS (574) STUDENTS
S.E.D. B.A.U. CAPACITY = 186 S.F./STUDENT
JUNE 2010 ENROLLMENT IS (618) STUDENTS
CURRENT ENROLLMENT = 206 S.F./STUDENT

NOT TO SCALE
JA-02
06-15-10



BBS
ARCHITECTS & ENGINEERS



HUNTINGTON UNION FREE SCHOOL DISTRICT
JACK ABRAMS INTERMEDIATE SCHOOL (1 OF 2) (4-6)
EXISTING SECOND FLOOR PLAN

NOT TO SCALE
JA-03
06-15-10

JACK ABRAMS INTERMEDIATE SCHOOL
106,885 G.S.F.
S.E.D. B.A.U. CAPACITY IS (574) STUDENTS
S.E.D. B.A.U. CAPACITY = 186 S.F. / STUDENT
JUNE 2010 ENROLLMENT IS (518) STUDENTS
CURRENT ENROLLMENT = 206 S.F. / STUDENT

J. TAYLOR FINLEY MIDDLE SCHOOL (7-8)

Site: 20.0 acres

Building: 117,884 g.s.f.

Enrollment: 662

B.A.U. Capacity: 831 (as currently utilized) (831 derived from 1,164 as 100% full utilization based upon class size policy and S.E.D. guidelines)



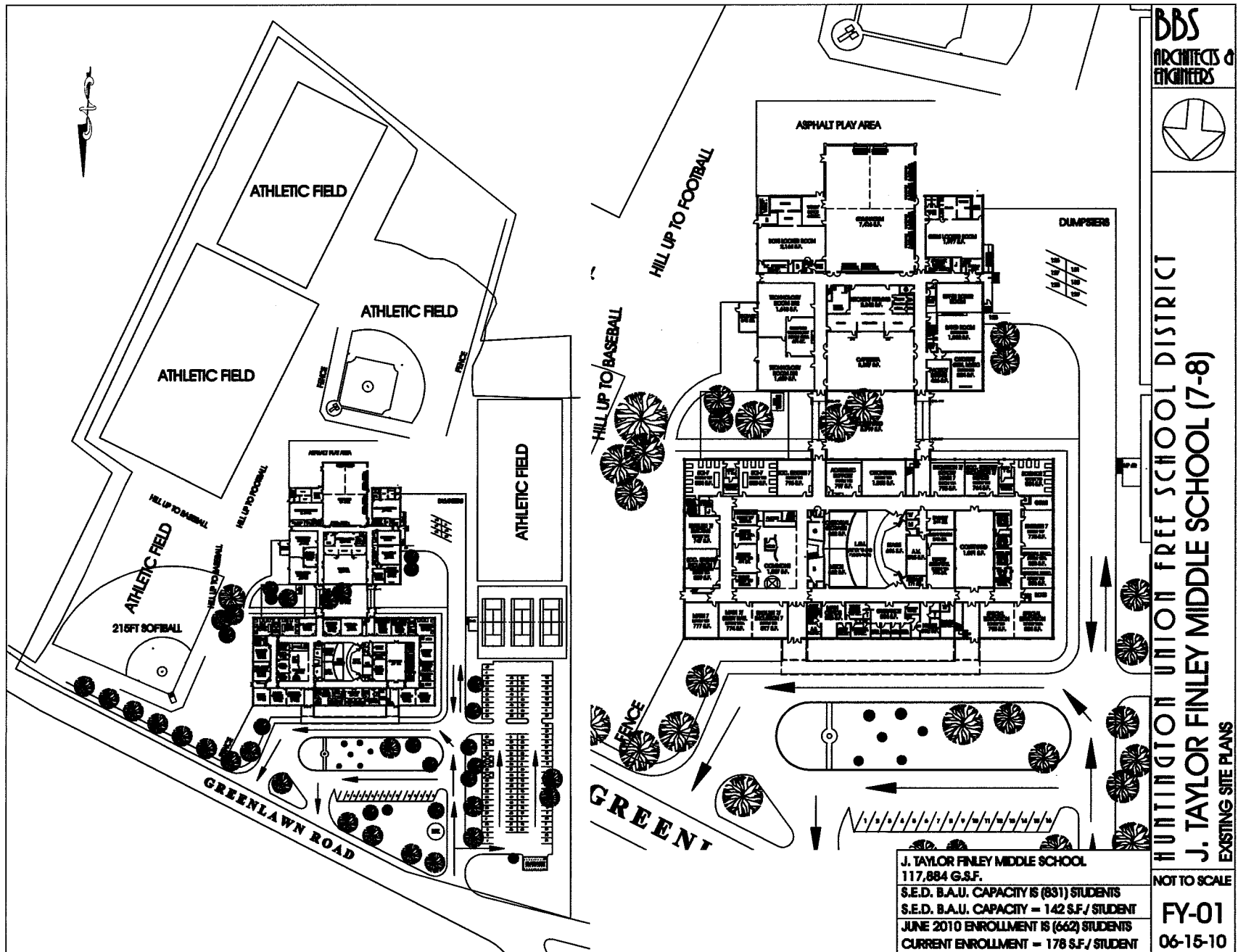
BBS
ARCHITECTS &
ENGINEERS



HUNTINGTON UNION FREE SCHOOL DISTRICT
J. TAYLOR FINLEY MIDDLE SCHOOL (7-8)
GOOGLE EARTH AERIAL

PER SUFFOLK COUNTY TAX MAP INFORMATION THE EXISTING SITE IS (20.0) ACRES
FOR (7-12) SECONDARY SCHOOLS, S.E.D. REQUIRES TEN (10) ACRES BASE, PLUS ONE (1) ACRE PER ONE HUNDRED (100) STUDENTS
PER THIS GUIDELINE, THIS SITE HAS AN ENROLLMENT CAPACITY OF 1,000 SECONDARY (7-12) STUDENTS.

NOT TO SCALE
AERIAL
06-15-10



BBS
ARCHITECTS &
ENGINEERS

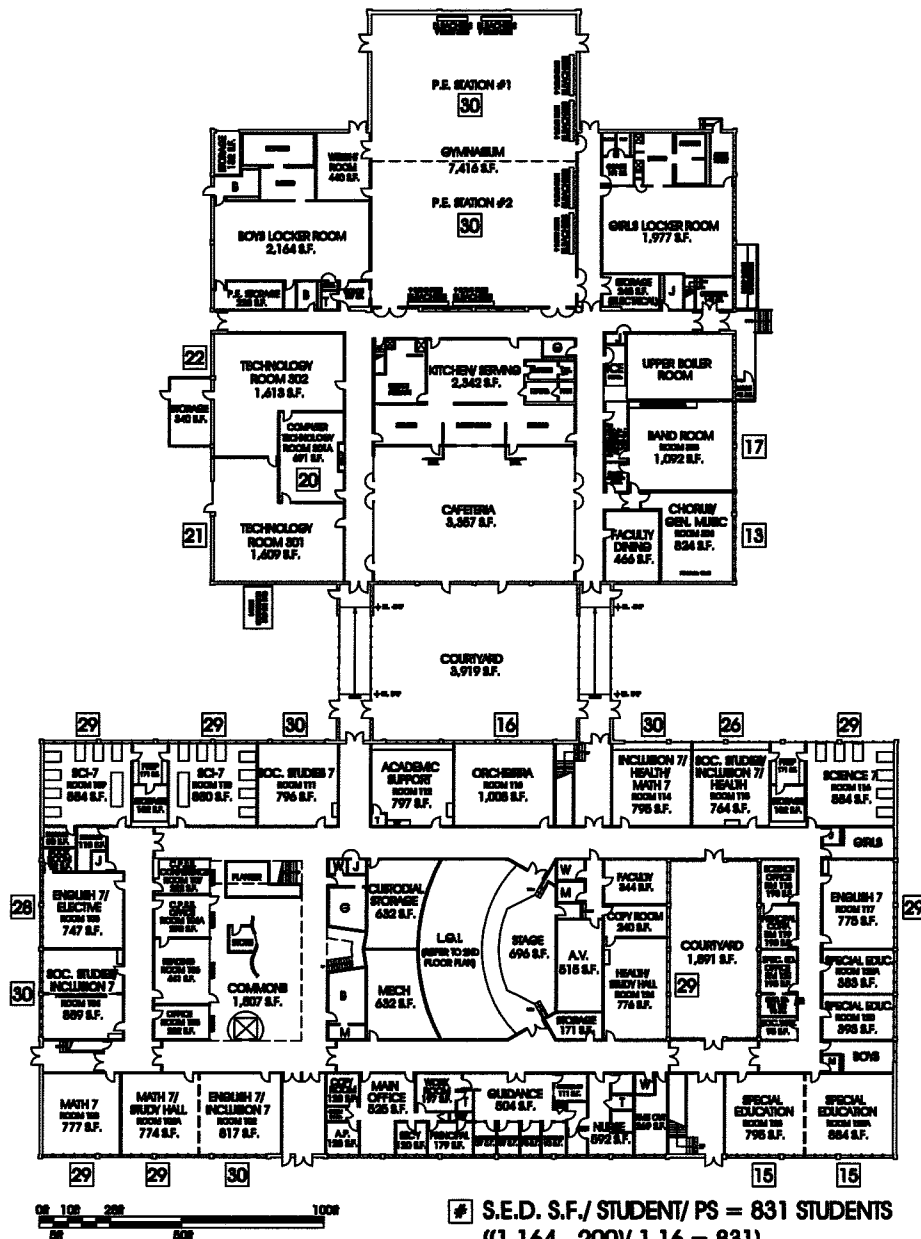


HUNTINGTON UNION FREE SCHOOL DISTRICT
J. TAYLOR FINLEY MIDDLE SCHOOL (7-8)
EXISTING SITE PLANS

NOT TO SCALE

FY-01
06-15-10

J. TAYLOR FINLEY MIDDLE SCHOOL
117,884 G.S.F.
S.E.D. B.A.U. CAPACITY IS (831) STUDENTS
S.E.D. B.A.U. CAPACITY = 142 S.F. / STUDENT
JUNE 2010 ENROLLMENT IS (662) STUDENTS
CURRENT ENROLLMENT = 178 S.F. / STUDENT



J. TAYLOR FINLEY MIDDLE SCHOOL
 117,884 G.S.F.
 S.E.D. B.A.U. CAPACITY IS (831) STUDENTS
 S.E.D. B.A.U. CAPACITY = 142 S.F./ STUDENT
 JUNE 2010 ENROLLMENT IS (662) STUDENTS
 CURRENT ENROLLMENT = 178 S.F./ STUDENT

BBS
 ARCHITECTS &
 ENGINEERS



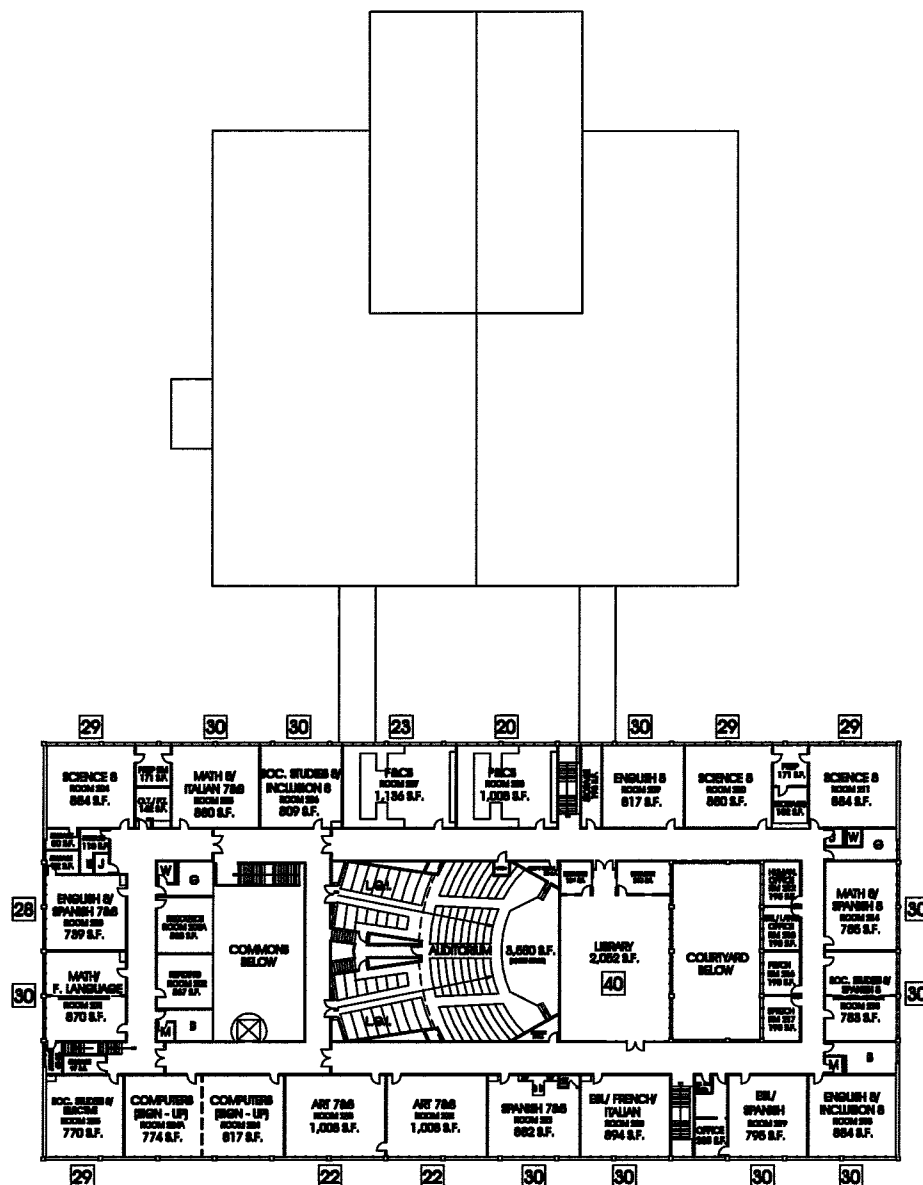
HUNTINGTON UNION FREE SCHOOL DISTRICT
 J. TAYLOR FINLEY MIDDLE SCHOOL (7-8)
 EXISTING FIRST FLOOR PLAN

NOT TO SCALE
 FY-02
 06-15-10

BBS
ARCHITECTS &
ENGINEERS



HUNTINGTON UNION FREE SCHOOL DISTRICT
J. TAYLOR FINLEY MIDDLE SCHOOL (7-8)
EXISTING SECOND FLOOR PLAN



S.E.D. S.F./STUDENT/PS = 831 STUDENTS
(1,164 - 200)/ 1.16 = 831

J. TAYLOR FINLEY MIDDLE SCHOOL
117,884 G.S.F.
S.E.D. B.A.U. CAPACITY IS (831) STUDENTS
S.E.D. B.A.U. CAPACITY = 142 S.F./STUDENT
JUNE 2010 ENROLLMENT IS (662) STUDENTS
CURRENT ENROLLMENT = 178 S.F./STUDENT

NOT TO SCALE
FY-03
06-15-10

HUNTINGTON HIGH SCHOOL (9-12)

Site: 36.0 acres

Building: 272,905 g.s.f.

Enrollment: 1,208

B.A.U. Capacity: 1,584 (as currently utilized) (1,584 derived from 2,038 as 100% full utilization based upon class size policy and S.E.D. guidelines.)



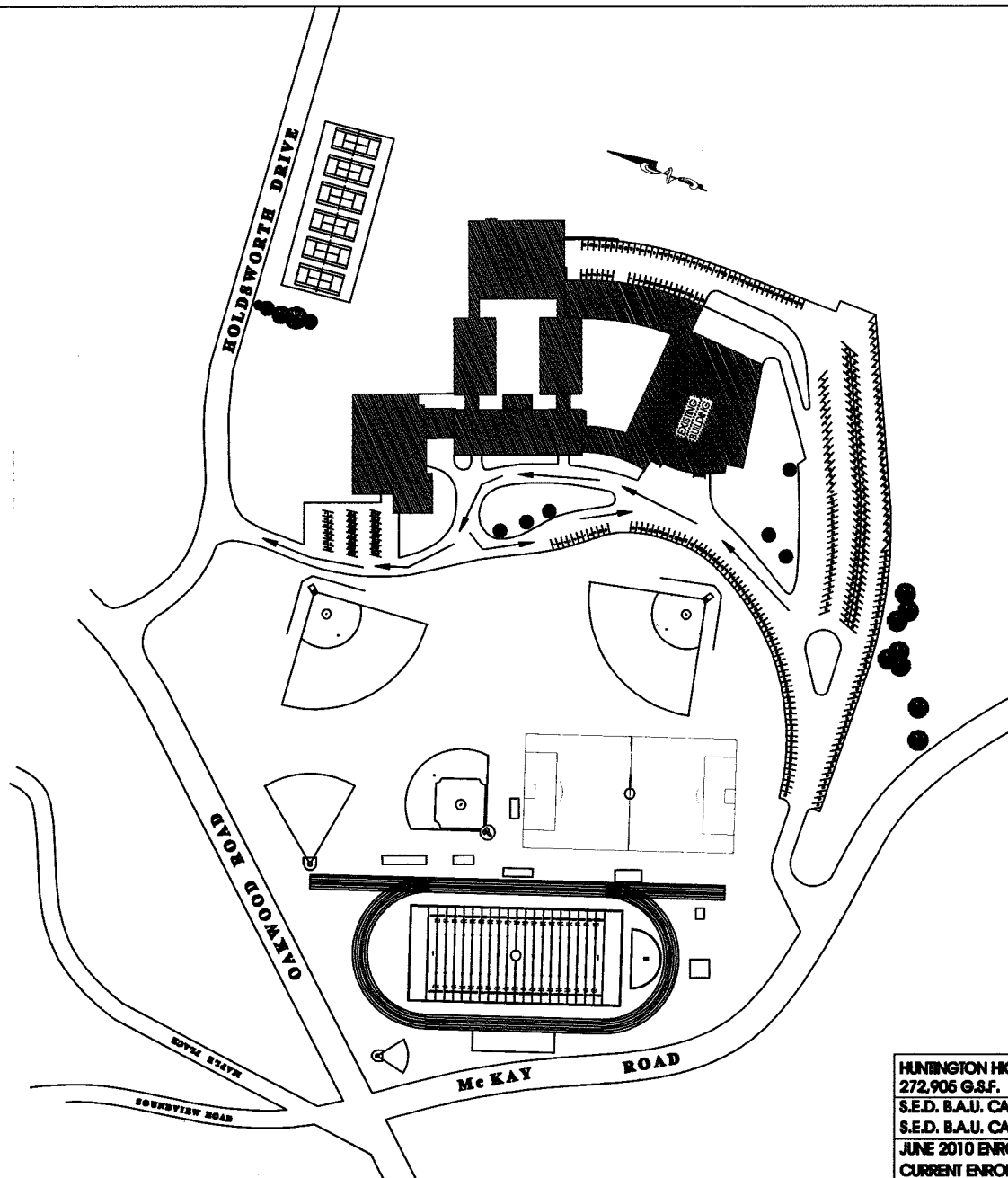
BBS
ARCHITECTS &
ENGINEERS



HUNTINGTON UNION FREE SCHOOL DISTRICT
HUNTINGTON HIGH SCHOOL
GOOGLE EARTH AERIAL

PER SUFFOLK COUNTY TAX MAP INFORMATION THE EXISTING SITE IS (36.0) ACRES
FOR (7-12) SECONDARY SCHOOLS, S.E.D. REQUIRES TEN (10) ACRES BASE, PLUS ONE (1) ACRE PER ONE HUNDRED (100) STUDENTS
PER THIS GUIDELINE, THIS SITE HAS AN ENROLLMENT CAPACITY OF 2,600 SECONDARY (7-12) STUDENTS.

NOT TO SCALE
AERIAL
06-16-10



HUNTINGTON HIGH SCHOOL
 272,905 G.S.F.
 S.E.D. B.A.U. CAPACITY IS 1,584 STUDENTS
 S.E.D. B.A.U. CAPACITY = 172 S.F. / STUDENT
 JUNE 2010 ENROLLMENT IS 1,208 STUDENTS
 CURRENT ENROLLMENT = 225 S.F. / STUDENT

BBS
 ARCHITECTS &
 ENGINEERS



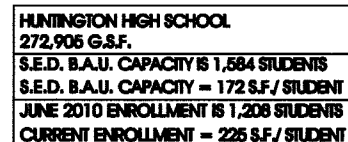
HUNTINGTON UNION FREE SCHOOL DISTRICT
 HUNTINGTON HIGH SCHOOL
 EXISTING SITE PLAN

NOT TO SCALE
 HS-01
 06-15-10



NOT TO SCALE

06-15-10



300 NASSAU ROAD

POSSIBLE ELEMENTARY (3-6)

Site:	11.1 acres
Building:	114,107 g.s.f.
Enrollment:	N/A
Capacity per Class Size Policy:	940 (projected utilization as (3-6) enrollment)



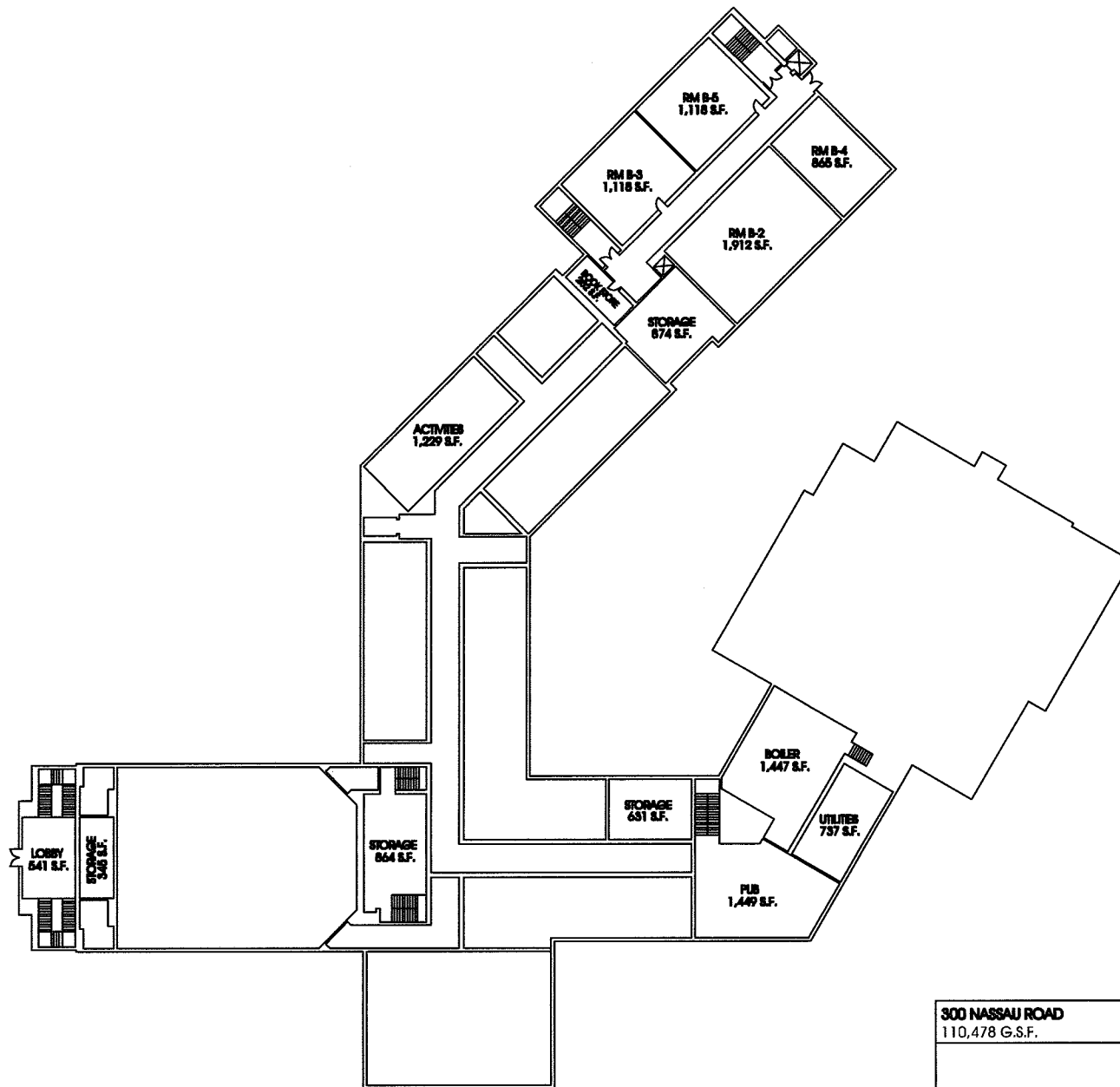
BBS
ARCHITECTS &
ENGINEERS



HUNTINGTON UNION FREE SCHOOL DISTRICT
300 NASSAU ROAD
GOOGLE EARTH AERIAL

PER SUFFOLK COUNTY TAX MAP INFORMATION THE EXISTING COMBINED SITE IS (11.1) ACRES
FOR (K-6) ELEMENTARY SCHOOLS, S.E.D. REQUIRES THREE (3) ACRES BASE, PLUS ONE (1) ACRE PER ONE HUNDRED (100) STUDENTS
PER THIS GUIDELINE, THIS SITE HAS AN ENROLLMENT CAPACITY OF (810) ELEMENTARY (K-6) STUDENTS.

NOT TO SCALE
AERIAL
2010



300 NASSAU ROAD
110,478 G.S.F.

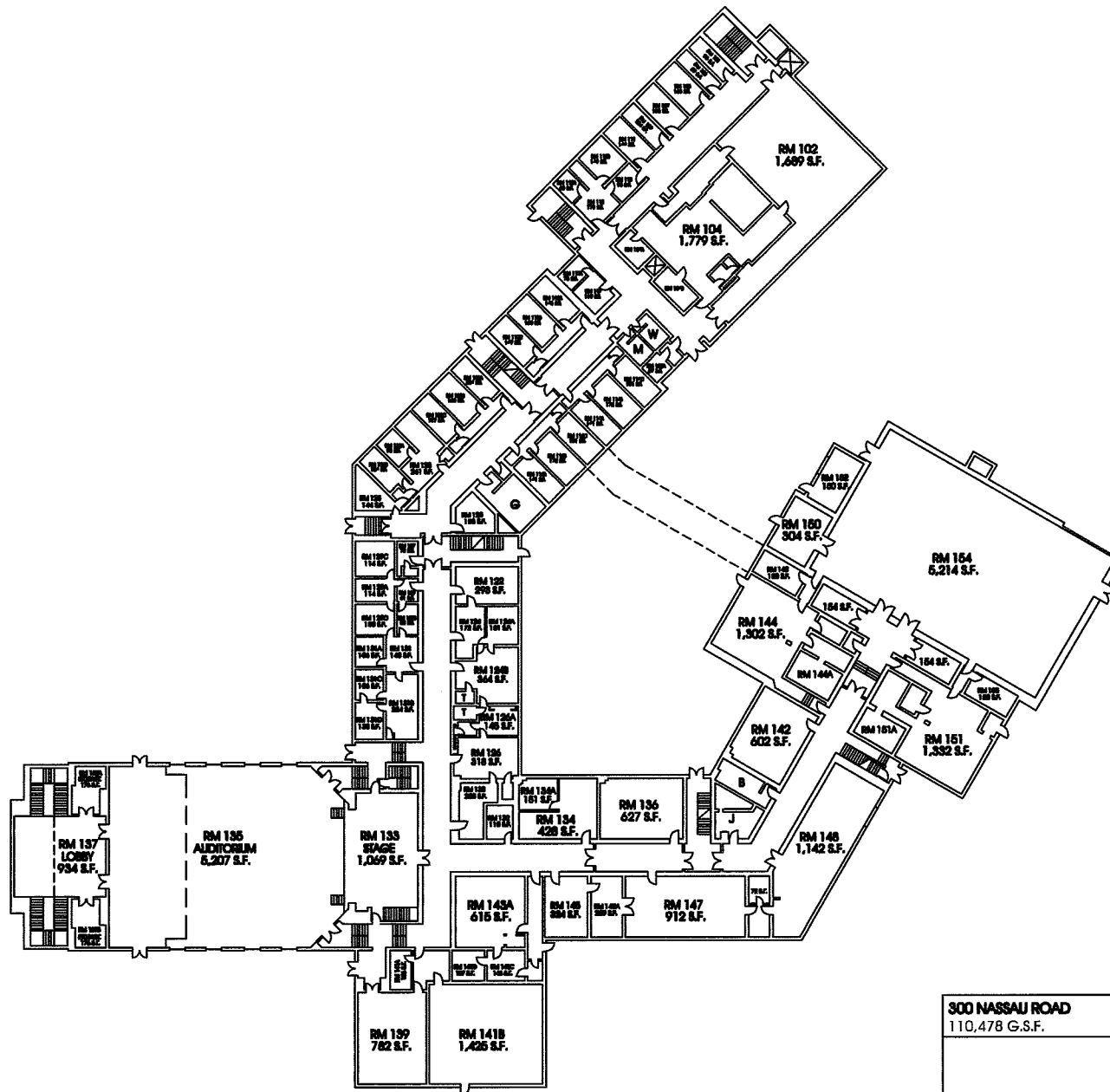
BBS
ARCHITECTS &
ENGINEERS



HUNTINGTON UNION FREE SCHOOL DISTRICT
300 NASSAU ROAD
EXISTING BASEMENT PLAN (NOT OWNED BY SCHOOL DISTRICT)

NOT TO SCALE

TO-01
2010



300 NASSAU ROAD
110,478 G.S.F.

BBS
ARCHITECTS &
ENGINEERS

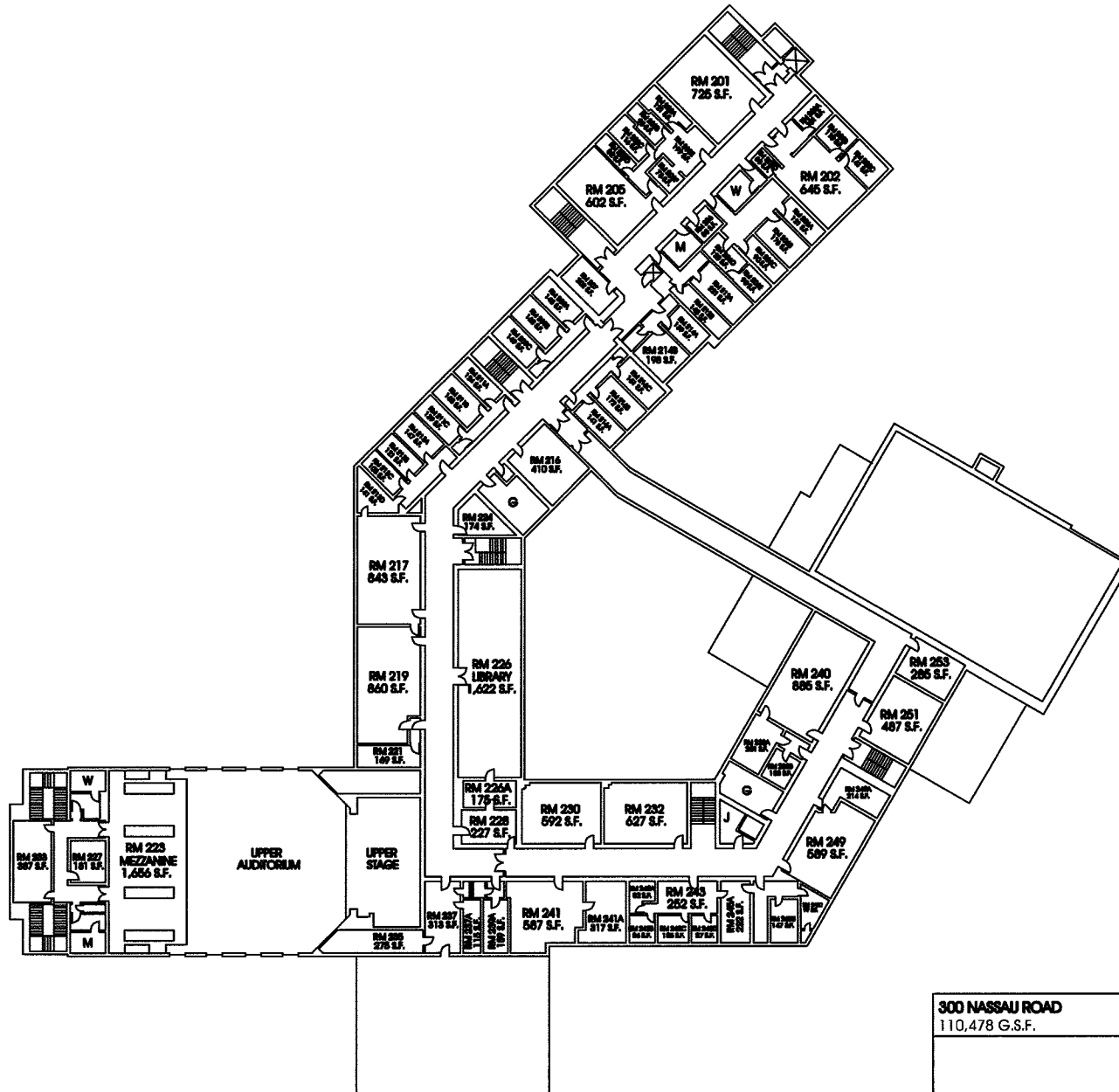


HUNTINGTON UNION FREE SCHOOL DISTRICT
300 NASSAU ROAD
EXISTING FIRST FLOOR PLAN (NOT OWNED BY SCHOOL DISTRICT)

NOT TO SCALE

TO-02

2010



300 NASSAU ROAD
110,478 G.S.F.

BBS
ARCHITECTS &
ENGINEERS



HUNTINGTON UNION FREE SCHOOL DISTRICT
300 NASSAU ROAD
EXISTING SECOND FLOOR PLAN (NOT OWNED BY SCHOOL DISTRICT)

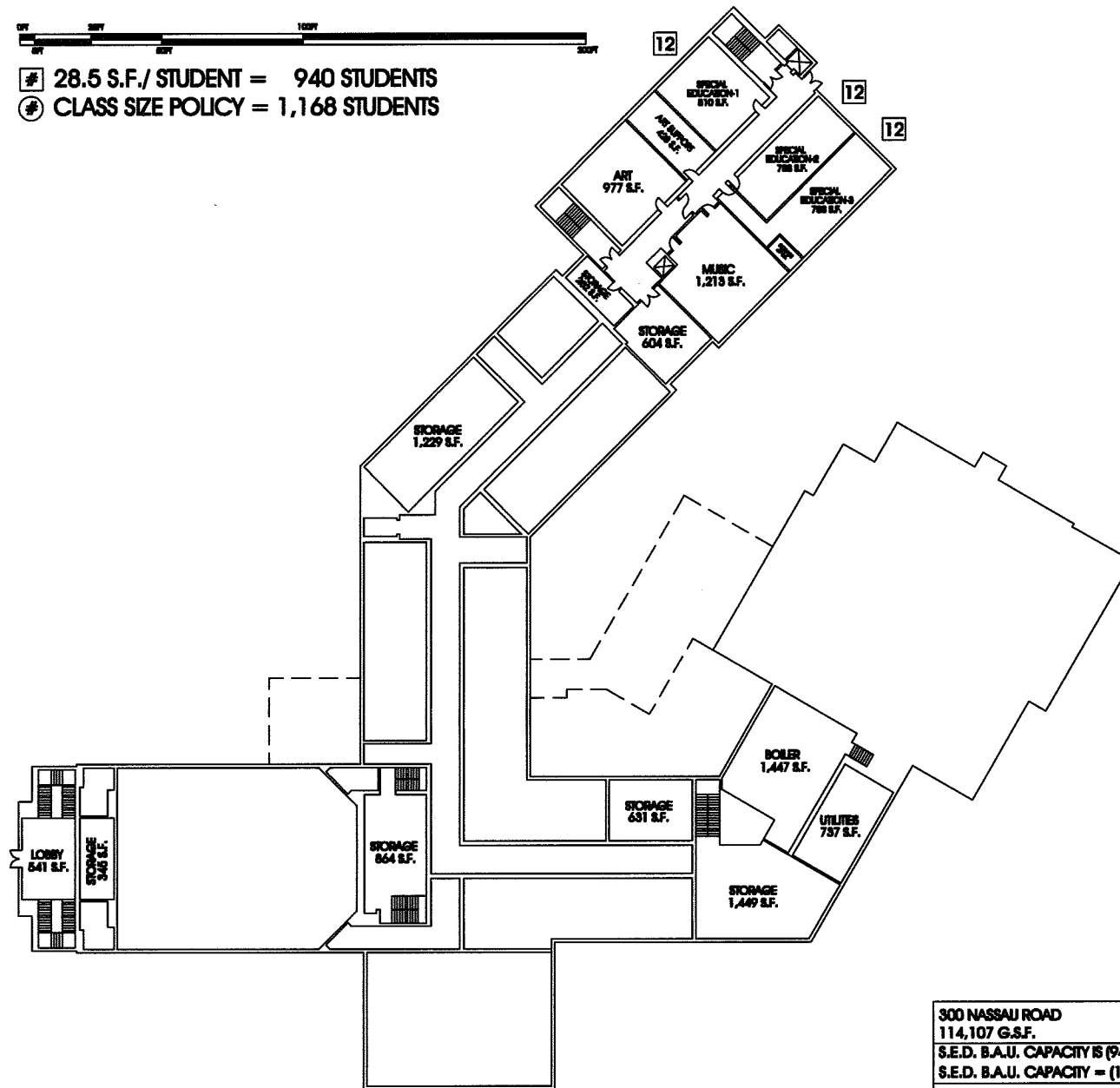
NOT TO SCALE

TO-03

2010



- # 28.5 S.F./ STUDENT = 940 STUDENTS
- ⊙ CLASS SIZE POLICY = 1,168 STUDENTS



300 NASSAU ROAD
 114,107 G.S.F.
 S.E.D. B.A.U. CAPACITY IS (940) STUDENTS
 S.E.D. B.A.U. CAPACITY = (121) S.F./ STUDENT

BBS
 ARCHITECTS &
 ENGINEERS



HUNTINGTON UNION FREE SCHOOL DISTRICT
 300 NASSAU RD (AS GRADE (3-6) SCHOOL BUILDING)
 EXISTING BASEMENT PLAN (NOT OWNED BY SCHOOL DISTRICT)

NOT TO SCALE

TO-04

2010



- # 28.5 S.F./ STUDENT = 940 STUDENTS
- ⊙ CLASS SIZE POLICY = 1,168 STUDENTS



300 NASSAU ROAD
114,107 G.S.F.
S.E.D. B.A.U. CAPACITY IS (940) STUDENTS
S.E.D. B.A.U. CAPACITY = (121) S.F./ STUDENT

BBS
ARCHITECTS &
ENGINEERS



HUNTINGTON UNION FREE SCHOOL DISTRICT
300 NASSAU RD (AS GRADE (3-6) SCHOOL BUILDING)
EXISTING FIRST FLOOR PLAN (NOT OWNED BY SCHOOL DISTRICT)

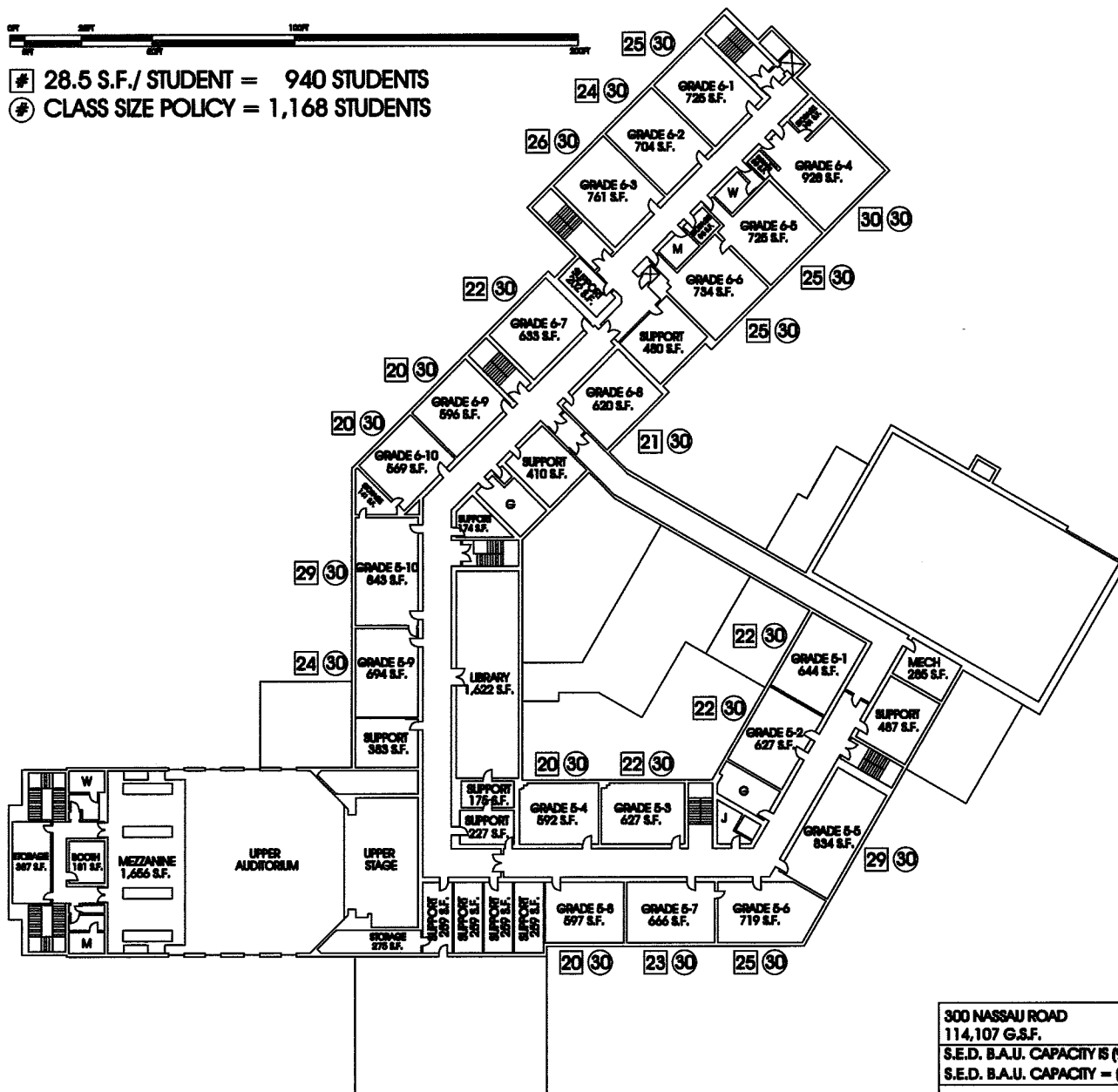
NOT TO SCALE

TO-05

2010



- # 28.5 S.F./ STUDENT = 940 STUDENTS
- ⊙ CLASS SIZE POLICY = 1,168 STUDENTS



300 NASSAU ROAD
114,107 G.S.F.
S.E.D. B.A.U. CAPACITY IS (940) STUDENTS
S.E.D. B.A.U. CAPACITY = (121) S.F./ STUDENT

BBS
ARCHITECTS &
ENGINEERS



HUNTINGTON UNION FREE SCHOOL DISTRICT
300 NASSAU RD (AS GRADE (3-6) SCHOOL BUILDING)
EXISTING SECOND FLOOR PLAN (NOT OWNED BY SCHOOL DISTRICT)

NOT TO SCALE

TO-06

2010

OVERALL DISTRICT CONFIGURATIONS

	Sep. '09	Sept '10	A	B	C	D	E	F	G	H	I	J
FLOWER HILL	K-3	K-3										
ENROLLMENT	378	372										
CAPACITY	490	490										
JEFFERSON	K-3	K-3										
ENROLLMENT	351	334										
CAPACITY	449	449										
SOUTHDOWN	K-3	K-3										
ENROLLMENT	366	364										
CAPACITY	460	460										
WASHINGTON	K-3	K-3										
ENROLLMENT	390	379										
CAPACITY	516	516										
WOODHULL	4-6	4-5										
ENROLLMENT	519	709										
CAPACITY	567	721										
JACK ABRAMS	4-6	6										
ENROLLMENT	518	347										
CAPACITY	574	417										
J. TAYLOR FINLEY	7-8	7-8										
ENROLLMENT	662											
CAPACITY	831	831										
HUNTINGTON HS	9-12	9-12										
ENROLLMENT	1,280											
CAPACITY	1,584	1,584										
300 NASSAU RD	N/A	N/A										
ENROLLMENT	0	0										
CAPACITY	0	0										
NEW BUILDING	N/A	N/A										
ENROLLMENT	0	0										
CAPACITY	0	0										
TOTAL ENROLLMENT	4,464											
TOTAL CAPACITY	5,471	5,468										

S.E.D. GUIDELINES: ELEMENTARY SCHOOLS

S.E.D. Elementary Schools Space Guidelines (K-6)

1	General Classrooms Grades (1-6)	770	S.F.	(minimum)	(Pre-existing classrooms additionally permitted to be 550 s.f. minimum)
2	Pre-K & Kindergarten Rooms	900	S.F.	(minimum)	
3	Library	900	S.F.	(minimum)	(1 through 12 CR buildings - none required) (13 plus CR buildings - 1 required)
4	Physical Education (Gymnasium)	1,872	S.F.	(36ft x 52ft)	(1 and 2 CR buildings - none required) (2 through 14 CR buildings - 1 required) (1 through 14 additional CR's - 1 additional)
5	Special Education 12:1 + 3.1	900	S.F.	(minimum)	(12) students maximum
6	Special Education 12:1 or 15:1	770	S.F.	(minimum)	(12) or (15) students maximum
7	Special Education 12:1:1	770	S.F.	(minimum)	(12) students maximum
8	Special Education 8:1:1	550	S.F.	(minimum)	(8) students maximum
9	Special Education 6:1:1	450	S.F.	(minimum)	(6) students maximum
10	Resource Room	300	S.F.	(minimum)	

S.E.D. Building Aid Units (B.A.U.) Calculation (building capacity): Elementary Schools

11	Compute areas of general classrooms and kindergarten greater than 550 s.f. but less than 770 s.f.
12	Maximum BAU for elementary schools is (27) students. (= limit of using 770 s.f. for calculation)
13	Classrooms under 550 s.f., art, music, support rooms, gyms, libraries, ec. are not counted towards BAU.